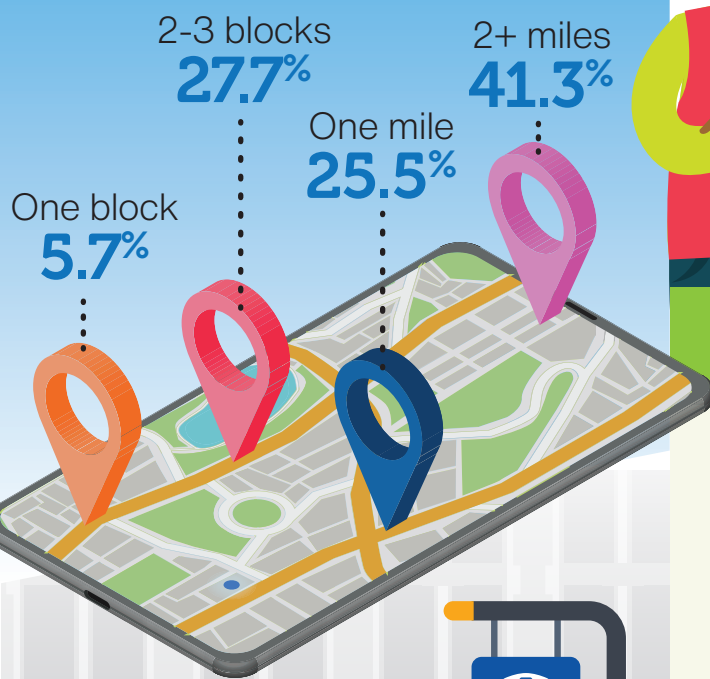




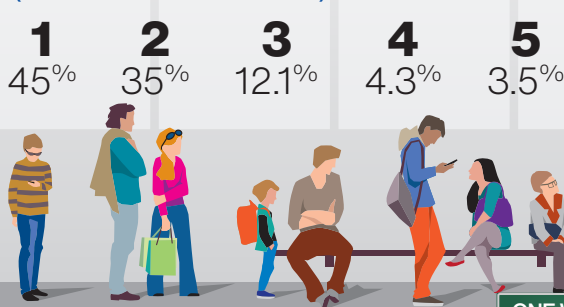
Transit Rider Survey '20



Distance to nearest stop



Transit riders (in the household)

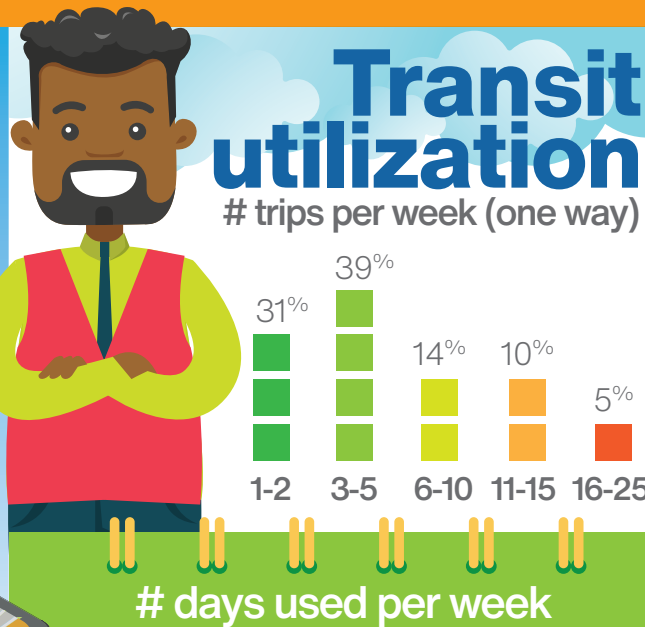


Distance of travel

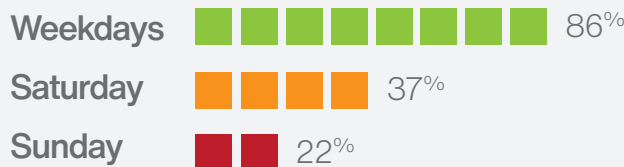
< 1 mile	3.6%
1-3 miles	20.0%
4-5 miles	25.0%
6-10 miles	24.3%
11+ miles	27.1%

Transit utilization

trips per week (one way)



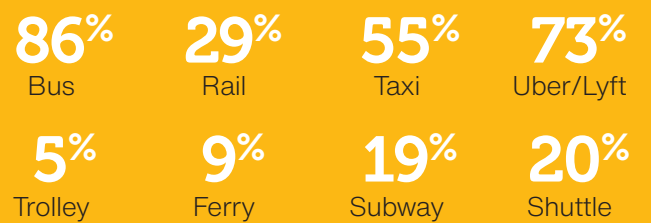
days used of the week



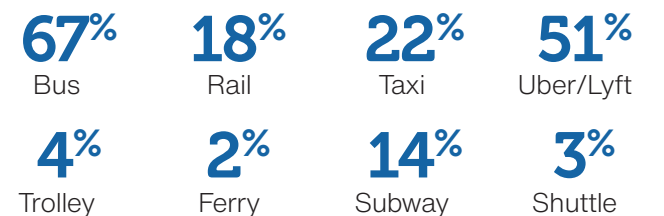
Use transit to travel between cities?



Modes of transit I What is available in your area?



Modes of transit II Which do you regularly use?



Duration of travel

1-14 minutes	15.7%
16-30 minutes	41.1%
31-54 minutes	17.9%
46-60 minutes	15.0%
1-2 hours	6.4%
2+ hours	2.9%

Electric Scooters & bike sharing

Does your agency offer one or both?

Yes **34%**
No **38%**
Unknown **28%**

If yes, do you make use of the service?

Yes **36%**
No **64%**

If no, would you use of the service?

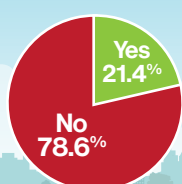
Yes **67%**
No **33%**

If yes, how often do you use the service?

Always **7%** | Usually **19%**
Sometimes **15%**
Rarely **59%**

On-demand & mobility

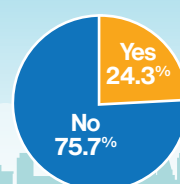
Rider have special needs?



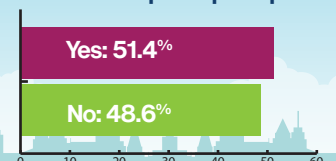
Required accommodations?

Wheelchair access	30.2%
Designated seating	34.0%
Scheduled pickup/dropoff	20.6%
Custom pickup/dropoff	18.9%
Audio announcements	20.8%
Visual announcements	11.3%

Use agency paratransit service?

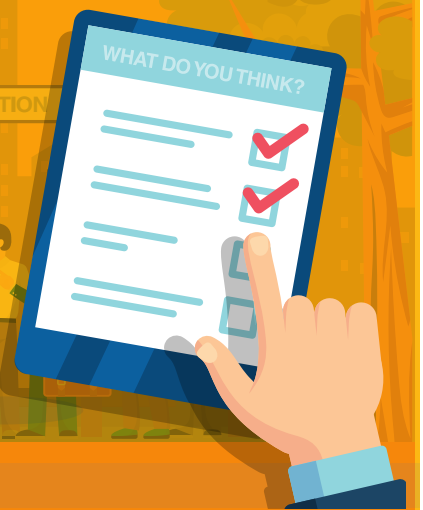


Does agency provide scheduling for non-medical pick-up/drop-off?





Transit Rider Survey '20



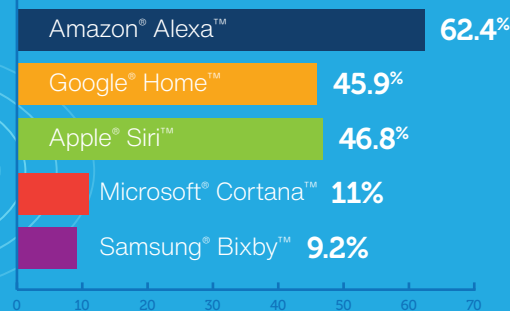
Smart assistants

Do you use them?

71% say 'yes'



Which one(s) do you use?



Does your agency provide its schedules to smart assistants?

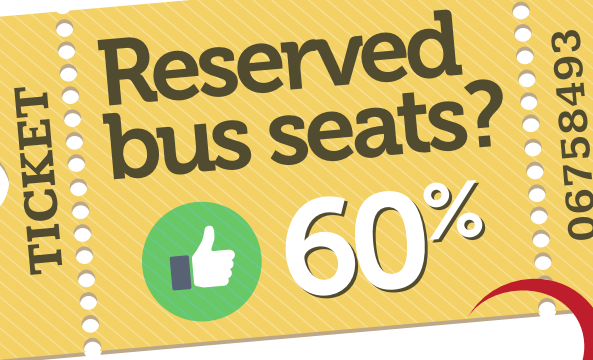
33.6% say 'yes'

What information would you like available on smart assistants?



How do you keep track of your transit schedules?

Tracking method	Number
AGENCY WEBSITE	32%
AGENCY APP	31%
PRINTED SCHEDULE	21%
3RD PARTY APP	10%
3RD PARTY WEBSITE	04%

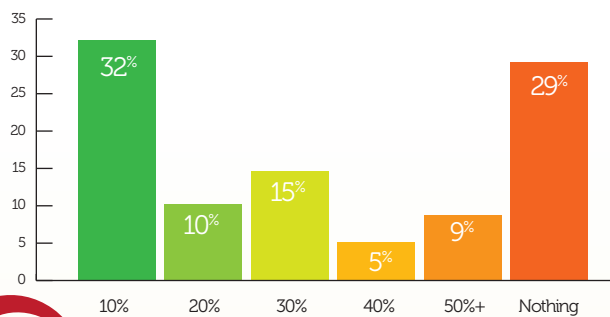


68%

of riders want to see real-time passenger counts



How much extra would you pay?



Does your agency vehicles have displays on their vehicles?

YES: 73.4%

Minimum reasonable amount of notice to reserve a seat in advance?



Points of interest

Rankings of common destinations

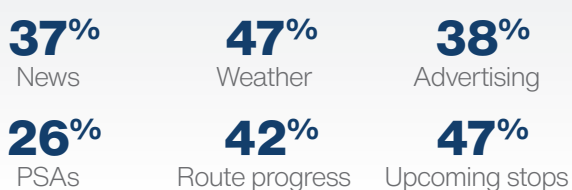


Onboard video content

Useful or annoying?

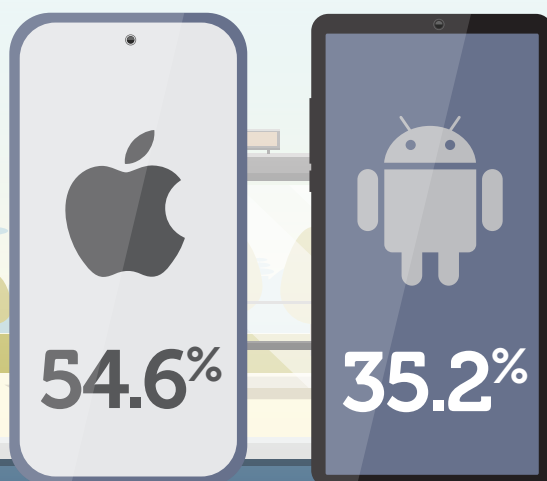


Preferred content?

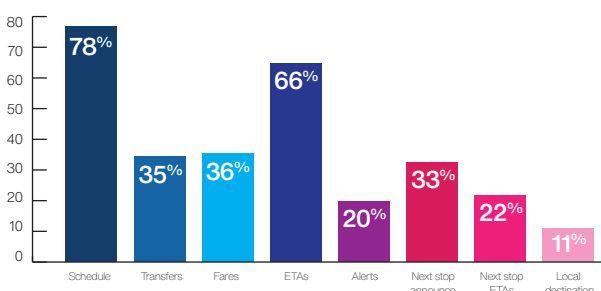


Tracking transit

Most used devices



Essential travel information:



Preferred communication platforms for points of interest information

